



LETS MOVE UK

SALES & LETTINGS IN BRISTOL
ONLINE



12 Seymour Place , BS36 2FH

Call now to arrange a viewing on this superb 2 bedroom semi detached home with a GARAGE in lovely location of Frampton Cottrell with access to The Mall, Aztec West and M32 and M4. The accommodation comprises, Lounge, Modern Kitchen/Diner with Fridge/freezer and washing machine , there are french doors to an enclosed rear garden. Downstairs cloakroom. To the first floor are 2 Double Bedrooms and lovely Family Bathroom with shower over bath . SORRY NO SHARERS, PETS, OR SMOKERS. The landlord had requested a household income of £27750 for this property. 12 MONTH CONTRACT. 5 Week Deposit . Holding Fee of £213.46 is needed to take this property .

£950 Per Calendar Month

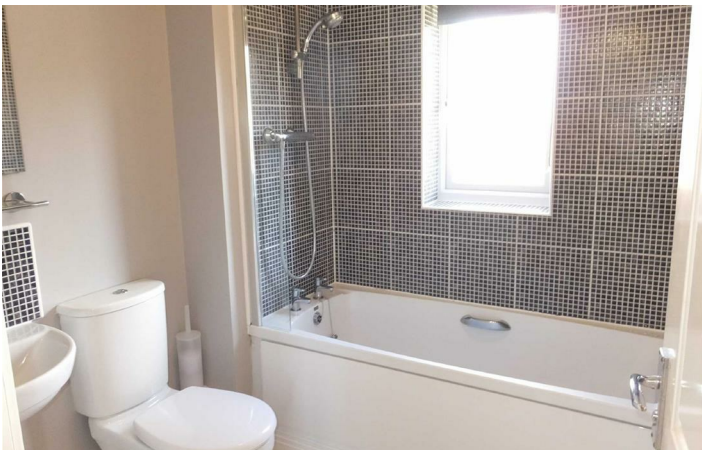
12 Seymour Place

, BS36 2FH



- Semi Detached
- 2 double bedrooms
- Epc Band C
- Cloakroom
- Garage

Directions





Floor Plan

These particulars, whilst believed to be accurate are set out as a general outline only for guidance and do not constitute any part of an offer or contract. Intending purchasers should not rely on them as statements of representation of fact, but must satisfy themselves by inspection or otherwise as to their accuracy. No person in this firms employment has the authority to make or give any representation or warranty in respect of the property.

